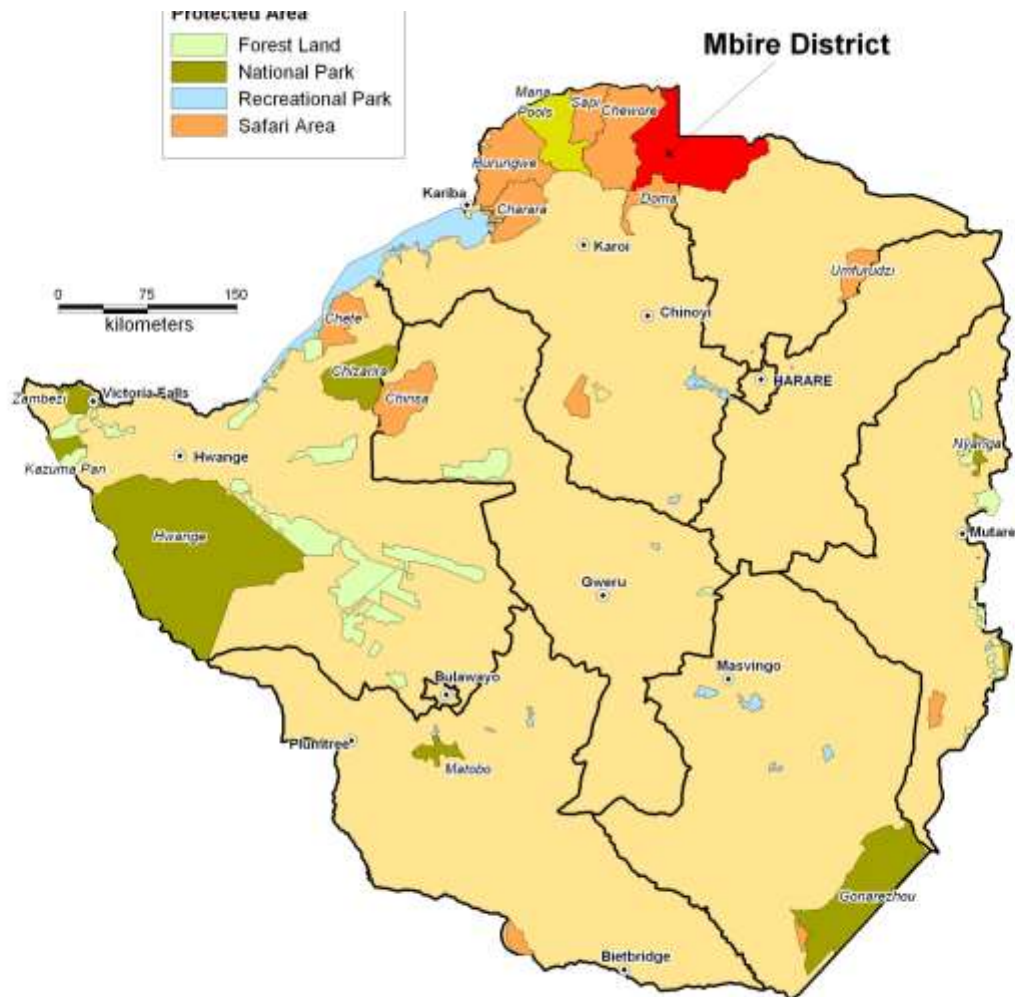


DAPU

DANDE ANTI POACHING UNIT



## Introduction

DAPU operates in the “Dande North” which is in the Mbire District. The one major thing that sets us apart from everyone else here, is that most of the area is “communal land” with a core National Parks concession. All this we operate in a genuine partnership with the council and communities under the CAMPFIRE program.

Because of:

1. People living in the area.
2. The sheer size of the Mbire district and
3. The huge and porous borders between Zimbabwe, Mozambique and Zambia.

We face a much, much larger challenge than any other group here. Also because of these factors, how we go about Anti poaching is perhaps a little different. For our district the CAMPFIRE model simply has got to work. People MUST realise the value for their game, or all is lost. So our anti poaching efforts are under pinned by:

1. Strong financial i.e. we make sure that any proceeds generated in the area are correctly channeled into the appropriate producer ward accounts.
2. Strong social responsibility i.e. from proceeds generated in the area we allocate \$67,000 per annum to District and Ward projects and we ensure that there is transparency.
3. Strong physical i.e. we do our best to have a robust anti poaching patrol programs.
4. Strong intelligence i.e. we pay good rewards for information.
5. Strong incentives i.e. we incentivize all stakeholders in the form of cash rewards for arrests, snares etc.

**2013**

**Dande Safari Area, Dande North and Dande East - actual payments to National Parks and Communities**

	<u>Activities</u>	<u>Social Funds</u>	<u>Camp rental</u>	<u>Total</u>	
<b><u>Council</u></b>	US\$206,624.0	US\$47,000.0	US\$3,000.0	US\$256,624.0	
<b><u>Parks</u></b>	US\$190,994.0	US\$0.0	US\$0.0	US\$190,994.0	
<b><u>Ward 4</u></b>	US\$27,365.0	US\$4,000.0	US\$3,500.0	US\$34,865.0	
<b><u>Ward 10</u></b>	US\$2,000.0	US\$1,000.0	US\$0.0	US\$3,000.0	
<b><u>Ward 11</u></b>	US\$21,057.0	US\$2,000.0	US\$0.0	US\$23,057.0	
<b><u>Ward 12</u></b>	US\$6,000.0	US\$2,500.0	US\$0.0	US\$8,500.0	
<b><u>Ward 1</u></b>	US\$41,237.5	US\$5,500.0	US\$0.0	US\$46,737.5	
<b><u>Ward 2</u></b>	US\$59,947.5	US\$5,500.0	US\$0.0	US\$65,447.5	
<b><u>Campfire</u></b>	US\$12,608.0	US\$0.0	US\$0.0	US\$12,608.0	
<b><u>ZTA</u></b>	US\$	US\$0.0	US\$0.0	US\$29,799.00	
<b><u>DAPU</u></b>	US\$0.0	US\$0.0	US\$0.0	US\$60,000.0	(estimated)
<b><u>Total Paid</u></b>	<b><u>US\$567,833.0</u></b>	<b><u>US\$67,500.0</u></b>	<b><u>US\$6,500.0</u></b>	<b><u>US\$731,632.00</u></b>	

**2014**

**Dande Safari Area, Dande North and Dande East - actual payments to National Parks and Communities**

	<b>Activities</b>	<b>Social Funds</b>	<b>Camp rental</b>	<b>Total</b>	
<b><u>Council</u></b>	US\$225,172.0	US\$47,000.0	US\$3,000.0	US\$275,172.0	
<b><u>Parks</u></b>	US\$147,374.0	US\$0.0	US\$0.0	US\$147,374.0	
<b><u>Ward 4</u></b>	US\$33,520.0	US\$4,000.0	US\$3,000.0	US\$40,520.0	
<b><u>Ward 10</u></b>	US\$525.0	US\$1,000.0	US\$0.0	US\$1,525.0	
<b><u>Ward 11</u></b>	US\$26,597.8	US\$2,000.0	US\$0.0	US\$28,597.8	
<b><u>Ward 12</u></b>	US\$0.0	US\$2,500.0	US\$0.0	US\$2,500.0	
<b><u>Ward 1</u></b>	US\$49,217.0	US\$5,500.0	US\$0.0	US\$54,717.0	
<b><u>Ward 2</u></b>	US\$71,352.3	US\$5,500.0	US\$0.0	US\$76,852.3	
<b><u>Campfire</u></b>	US\$14,650.0	US\$0.0	US\$0.0	US\$14,650.0	
<b><u>ZTA</u></b>	US\$24,466.00	\$0	\$0	US\$24,466.00	
<b><u>DAPU</u></b>	US\$0.0	US\$0.0	US\$0.0	US\$71,968.0	(actual)
<b><u>Total Paid</u></b>	<b><u>US\$568,408.1</u></b>	<b><u>US\$67,500.0</u></b>	<b><u>US\$6,000.0</u></b>	<b><u>US\$738,342.00</u></b>	

2015

Dande Safari Area, Dande North and Dande East - actual payments to National Parks and Communities

	Activities	Social funds	Camp rental	Total	Notes
Council	\$121,693.00	\$47,000.00	\$3,000.00	\$171,693.00	
Parks	\$131,768.08	\$0	\$0	\$131,768.08	
Ward 4	\$22,261.91	\$4,000.00	\$3,500	\$29,762.00	
Ward 10	\$3,862.50	\$1,000.00	\$0	\$4,862.00	
Ward 11	\$15,950.05	\$2,000.00	\$0	\$17,950.00	
Ward 12	\$0	\$2,500.00	\$0	\$2,500.00	
Ward 1	\$35,582.86	\$5,500.00	\$0	\$41,082.00	
Ward 2	\$55,794.73	\$5,500.00	\$0	\$61,295.00	
Campfire	\$10,515.00	\$0	\$0	\$10,515.00	
ZTA	\$18,164.00	\$0	\$0	\$18,164.00	
DAPU	\$80,000.00	\$0	\$0	\$80,000	(estimated)
<b><u>Total Paid</u></b>	<b><u>\$495,591.00</u></b>	<b><u>\$67,500.00</u></b>	<b><u>\$7,500.00</u></b>	<b><u>\$589,592.00</u></b>	I have added \$20,000 for incomplete hunts

DAPU survives exclusively through funding from ourselves and generous donations from our clients who, when on the ground realise that without DAPU involvement we would be losing many more animals to poaching. For your information in 2010 we estimated 40 elephant carcasses were found. You can see clearly that we, in association with National Parks have had a noticeable positive effect on elephant poaching in our concessions.

**Elephant poaching statistics**  
**(90% accurate)**

<b>Year</b>	<b>No of Carcasses</b>
2010	40
2011	36
2012	16
2013	4
2014	9
2015	4

---

## Practical anti poaching.

1. Poor rural communities on the frontline of elephant and human conflict zones simply will not tolerate any crop damage and will take the law in to their own hands. These same communities are what we call the producer wards and currently they enjoy the benefits of our activities.

2. Currently the communities in producer wards act as our eyes and ears and actually do not want to see their benefits being depleted by poachers. HOWEVER, if there are no rewards to be had from these activities they will in turn actively assist or actually poach those same elephants for reward.

3. The use of POISON is a GAME CHANGER. Not only are poisons readily available, but also their use is almost risk free from a poachers point of view – silent and supremely efficient . They have an added benefit from a poachers/ disgruntled communities point of view of killing lions, leopards and hyenas too.



## **DAPU – on the ground operations.**

We found when we began in 2010 that the “community scouts” were thoroughly discouraged as often they went up to a year without any pay. Immediately we began support of the community scouts (10 to begin with) in Dande East. The ward paid them half their salary and we paid the other half as well as fed and equipped them. The results were gratifying and almost immediately the poachers were on the back foot and thousands of snares had been picked up and dozens of poachers were arrested.

### **DAPU has;**

1. Two full time “managers” employed.
2. Two dedicated land cruisers allocated.
3. 22 “community scouts” under DAPU control.
4. Access to 18 “Council Scouts”.
5. Access to 18 “Parks Rangers”.

## DAPU Reward for Anti Poaching efforts/incentive

### Category 1 - elephant poaching (all rewards paid on conviction ONLY)

	Reward/ Tariff	Paid to
"Gunner" or shooter ea.	500	Scouts involved in arrests
Accomplices ea.	250	Scouts involved in arrests
Informer/Information	100	To informers/informant
Sergeant/Manager per "gunner"	150	CMS Manager (Bongi/Muno)
Sergeant/Manager per "accomplice"	100	CMS Manager (Bongi/Muno)

## Category 2 - meat poaching (all rewards paid on conviction ONLY)

	Reward/ Tariff	Paid to
Poacher ea.	100	Scouts involved in arrests
Dogs ea.	10	Scouts involved in arrests
Snare ea.	2	Scouts involved
Informer/Information	50	To informers/informant
Sergeant/Manager (per poacher)	50	CMS Manager (Bongi/Muno)

- Category 3 - fish poaching (all rewards on conviction ONLY)

	Reward/ Tariff	Paid to
Poacher ea.	100	Scouts involved in arrests
Dogs ea.	10	Scouts involved in arrests
Snares ea.	2	Scouts involved
Informer/Information	50	To informers/informant
Sergeant/Manager (per poacher)	50	CMS Manager (Bongi/Muno)

## 2014 Successes

	No. Snares	Dogs shot	Meat poachers convicted	Elephant poachers convicted	Weapons retrieved	Nets retrieved	Poached elephants	Canoes confiscated	Rewards paid
March	46	2	5	0	2	1	0	1	422
April	91	1	0	0	4	0	0	0	212
May	95	1	2	0	4	0	0	0	670
June	311	0	6	0	5	0	0	0	1597
July	149	0	1	0	1	0	0	0	503
August	48	0	0	0	0	0	0	0	96
September	125	1	0	0	0	0	0	0	250
October	221	2	2	0	1	0	0	0	597
November	955	2	2	2	2	0	0	0	4190
December	334	0	1	2	3	0	0	0	1065
	<b><u>2375</u></b>	<b><u>9</u></b>	<b><u>19</u></b>	<b><u>4 (1 Deceased)</u></b>	<b><u>22</u></b>	<b><u>1</u></b>	<b><u>9</u></b>	<b><u>1</u></b>	<b><u>\$9,602</u></b>

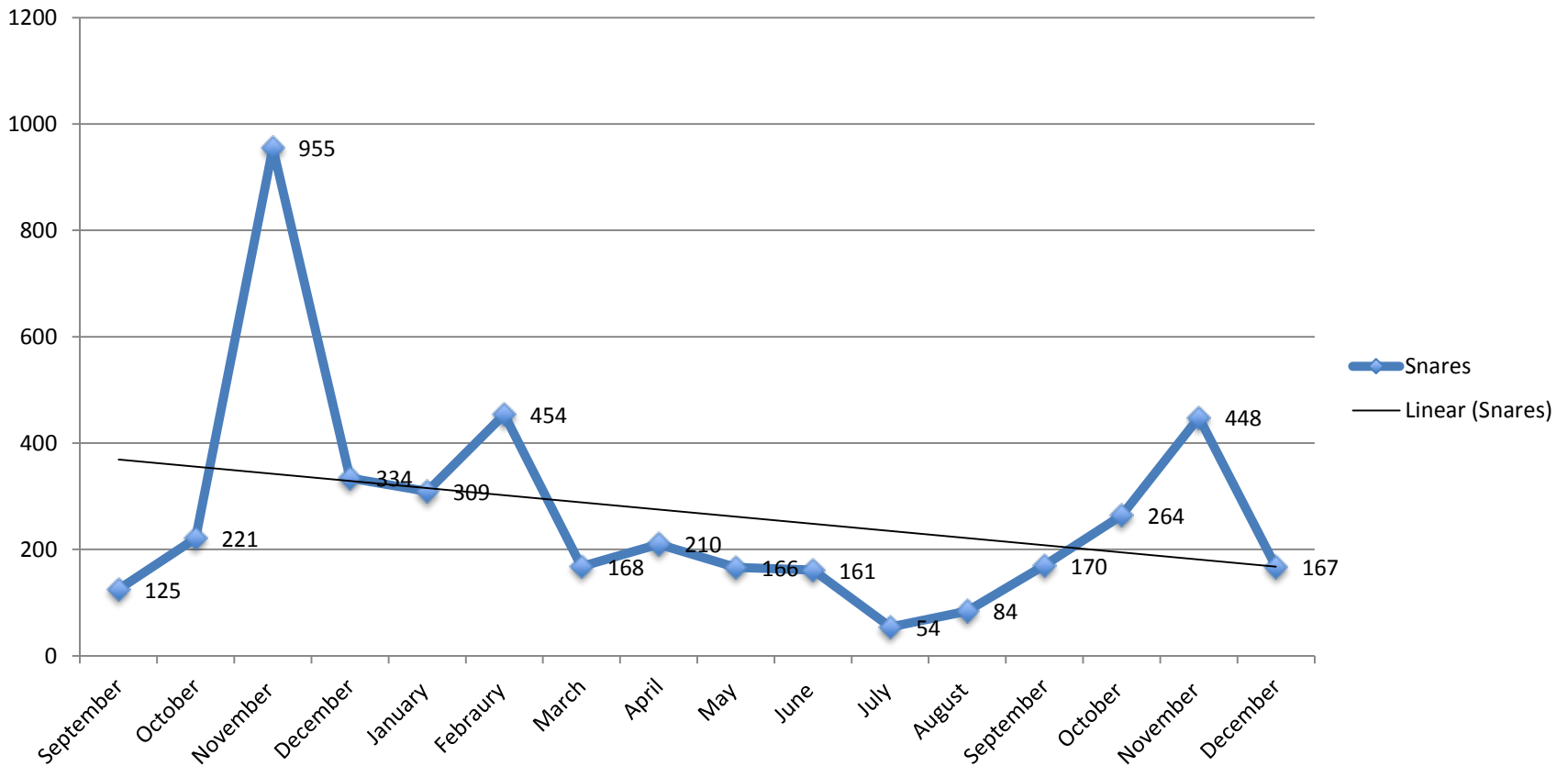
## 2015 Successes

	No. Snares	Dogs shot	Meat poachers convicted	Elephant poachers convicted	Weapons retrieved	Nets retrieved	Poached Elephants	Canoes confiscated	Rewards paid
January	309	0	5	0	0	0	0	0	1518
February	454	0	0	0	0	0	2	0	908
March	168	1	1	0	0	0	1	0	336
April	210	1	1	0	0	0	0	0	420
May	166	0	0	0	0	0	0	0	166
June	161	0	0	0	0	0	0	0	176
July	54	0	0	0	0	0	0	0	97
August	84	0	0	0	0	0	0	0	135
September	172	7	0	0	9	0	0	0	386
October	264	6	2	0	0	0	0	0	899
November	448	5	1	5	2	0	1	0	3493
December	167	0	1 (leopard)	0	0	0	0	0	710
	<b><u>2655</u></b>	<b><u>20</u></b>	<b><u>11</u></b>	<b><u>5</u></b>	<b><u>11</u></b>		<b><u>4</u></b>		<b><u>\$9,244.00</u></b>

**15 month poaching trend September 2014 to September 2015 (indexed in snares found).**

**\*\*\*You will notice a gradual downwards trend and also a massive decrease during the high season\*\*\***

### Snares



## 2014 Monthly DAPU Expenses

<b>Expenses</b>	<b>Scouts</b>	<b>Mg/ment</b>	<b>Rations</b>	<b>Rewards</b>	<b>Total</b>
Jan	\$500	\$1400	\$350	\$0	\$2250
Feb	\$500	\$1400	\$350	\$0	\$2250
March	\$500	\$1400	\$350	\$422	\$2672
April	\$1100	\$1400	\$770	\$212	\$3482
May	\$1100	\$1400	\$770	\$670	\$3940
June	\$1100	\$1400	\$770	\$1597	\$4867
July	\$1100	\$1400	\$770	\$503	\$3773
August	\$1100	\$1400	\$770	\$96	\$3366
September	\$1100	\$1400	\$770	\$250	\$3520
October	\$1100	\$1400	\$770	\$597	\$3867
November	\$1100	\$1400	\$770	\$4190	\$7460
December	\$1100	\$1400	\$770	\$1065	\$4335
Christmas	\$1100	\$1400	\$0	\$0	\$3075
<b><u>Total</u></b>	<b><u>\$13075</u></b>	<b><u>\$18200</u></b>	<b><u>\$7980</u></b>	<b><u>\$9602</u></b>	<b><u>\$48857</u></b>



## DAPU 2015 Budget

	<b>2015 (actual)</b>	<b>2014 (actual)</b>
<b><u>Receipts</u></b>		
From donors/ clients	\$34,056	\$35904
C.M.S	\$40756	\$36064
	<b><u>\$74,813</u></b>	<b><u>\$71968</u></b>
<b><u>Less Expenses</u></b>		
Wages scouts (paid from Jan. in 2015)	\$14,300	\$13075
Management	\$18200	\$18200
Rations (from Jan. 22 scouts)	\$9240	\$7980
Rewards	\$9582	\$9602
Equipment	\$2603	\$6861
Landcruiser operating costs	\$20,888	\$16250
	<b><u>\$74,813</u></b>	<b><u>\$71968</u></b>
<b><u>Shortfall</u></b>	<b><u>\$0.00</u></b>	<b><u>\$0.00</u></b>

## Biggest Challenges

1. Financial-With by far the biggest area to look after and with the most challenges I am sure I join the list of all other organizations here pleading poverty. We really are under-staffed and short of kit but are doing our best with what we can afford.
2. Short leases – are a challenge as there is little incentive to plough back in to Anti poaching and communities.
3. We have a border with Mozambique of over 100Km's and poaching there is rife and out of control. This directly affects our operations.
4. We have a porous 15km border with Zambia – which is a common threat with other folk here.
5. Human population increases.
6. Often times hugely lenient sentences by the judiciary.

## Conclusion

Generally in Dande we are quite pleased with our results. I think especially if one takes in to account the immense size of the area and other factors I have already mentioned.

Thanks to National Parks and DAPU I think our record is certainly infinitely better than just about every other area in the Zambezi Valley especially in terms of elephant poaching. We will continue to improve and evolve and I look forward to hearing of other successes from groups here in time.

To conclude I think everyone here needs to keep one word in mind.

That word is COMMITMENT. We need much greater commitment from the Govt. from National Parks, from Councils AND from the private sector.

## **MBIRE POPULATION**

<b>ward</b>	<b>Males</b>	<b>Females</b>	<b>Total</b>	<b>House holds</b>
<b>1</b>	1558	1622	3180	705
<b>2</b>	2337	2514	4851	1149
<b>3</b>	3073	3033	6106	1337
<b>4</b>	3529	3587	7116	1578
<b>5</b>	2608	2681	5289	1192
<b>6</b>	1950	2112	4062	900
<b>7</b>	1293	1256	2549	569
<b>8</b>	4182	4235	8417	1751
<b>9</b>	2462	2437	4899	1126
<b>10</b>	3414	3503	6917	1489
<b>11</b>	829	809	1638	332
<b>12</b>	3292	3493	6785	1508
<b>13</b>	2820	2925	5745	1258
<b>14</b>	1235	1174	2409	553
<b>15</b>	2464	2698	5162	1224
<b>16</b>	1493	1503	2996	624
<b>17</b>	1920	1892	3812	834
<b>Total</b>	40459	41474	81933	18129

Problem Animal Control HISTORY TO DATE 2015

**ANIMALS KILLED ON PAC**

Animal	2003	2004	2005	2006	2007	2008	2009	2010	2011	2012	2013	2014	2015
Elephant	9	16	14	11	12	7	8	6	2	7	8	4	5
Buffalo	10	9	15	12	12	8	6	1	0	1	1	1	0
Crocodile	0	2	0	0	0	4	1	2	1	0	1	1	2
Lion	0	0	0	0	0	2	1	12	1	0	1	2	1
Hippo	1	0	0	0	1	3	2	0	0	1	1	1	0

DOMESTIC ANIMALS KILLED BY LIONS JAN 2010 TO 2015

Ward	Cattle	Donkey	Goat	Dog	Chicken
1. Kanyemba	1	0	60	6	0
2. Angwa	25	10	48	0	0
3. Shange	22	8	30	0	0
4. Gonono	20	10	20	0	0
7. Hambe	30	5	15	0	0
8. Mhokwe	30	0	10	0	0
9. Mushumbi	12	0	10	0	0
10. Chitsungo	60	12	35	1	0
11. Masoka	0	2	20	103	74
TOTAL	200	47	248	110	74

<u>HUMAN AND WILDLIFE CONFLICT/DEATHS</u>													
Animal	2003	2004	2005	2006	2007	2008	2009	2010	2011	2012	2013	2014	2015
Elephant	1	0	2	0	2	0	0	2	0	1	1	0	1
Buffalo	1	1	1	0	3	2	2	0	1	0	0	1	0
Crocodile	1	1	0	0	4	2	1	6	1	0	0	1	2
Lion	0	0	0	0	0	3	1	3	0	0	0	0	1
Hippo	0	0	0	0	0	1	0	0	0	0	0	0	0
Snake	0	0	0	0	0	0	3	6	4	1	0	1	1
Bee	0	0	0	0	0	0	1	3	0	0	0	0	1
Jackal	0	0	0	0	0	0	0	0	0	0	0	0	0
TOTAL	3	2	3	0	9	8	8	20	6	2	1	3	6

<u>HUMAN AND WILDLIFE CONFLICT/INJURIES</u>													
Animal	2003	2004	2005	2006	2007	2008	2009	2010	2011	2012	2013	2014	2015
Lion	0	0	2	0	0	1	0	1	1	0	0	0	0
Buffalo	0	2	1	2	0	2	1	0	0	0	0	1	0
Crocodile	0	2	2	0	2	2	4	7	6	2	4	5	5
Snake	0	0	0	0	0	0	0	4	6	0	0	0	4
Hippo	0	0	0	0	0	0	0	1	0	0	1	2	0
Jackal	0	0	0	0	0	0	0	0	1	0	0	2	0
Elephant	0	0	0	0	0	0	0	0	2	4	2	2	0
TOTAL	0	4	5	2	2	5	5	13	16	6	7	12	9